

Alaska Department of Fish and Game

Habitat Section
Southeast Region



112-50-10100 Tributary 4

ADDITION

Water body name:

Quad: Sitka D-4

Upper Reach Latitude: 57.862297 **Longitude:** -135.140725

Lower Reach Latitude: 57.861509 **Longitude:** -135.139025

Survey date: 8/30/2022

Species & Lifestage:

Survey crew: FC, RR

Findings: We surveyed this uncataloged stream using a backpack electrofisher and GPS and captured juvenile coho salmon. We captured Dolly Varden in an adjacent tributary. The tributary stream flows through a 4-to-5 ft wide culvert and joins another small tributary descending from a nearby road crossing (Table 1; Figures 1–3).

Recommendations: Add this uncataloged stream to the anadromous waters catalog for rearing coho salmon (Figure 4).

Nomination: Pending

Table 1.—112-50-10100 tributary 4 survey data.

Waypoint	Latitude	Longitude	Notes	Stream Width ft	Stream Substrate	Habitat Features	Gradient %	Sample Effort	Sample Results
1643	57.862276	-135.141282	3' CMP with 2-4% gradient through, poorly aligned with stream. ~18" rust-line. Resident fish capture just upstream of pipe; CO capture at downstream waypoint at confluence.	6-8	Small Gravel Large Gravel		4-6	EF	3 DV
1644	57.862089	-135.140762	Confluence of streams flowing out of culverts 30-60' upstream. Gradient decreases compared to river-right tributary. 1-yr and 2-yr CO capture.	10-12	Small Gravel Large Gravel		1-2	EF	2 CO
1645	57.862151	-135.140743	4-5' CMP with 1-2% gradient through and gravel/cobble sediment in pipe. ~1' rust-line.	6-8	Small Gravel Large Gravel		1-2	EF	
1646	57.862282	-135.140744	Continued CO capture ~20' upstream of culvert. Gradient quickly increases upstream with 2' falls over log/debris jam.	4-6	Small Gravel Large Gravel	Log Jams	4-6	EF	2 CO



Figure 1.—Juvenile coho salmon captured at waypoint 1644.



Figure 2.—Channel at waypoint 1645.



Figure 3.—Culvert outlet at waypoint 1645.

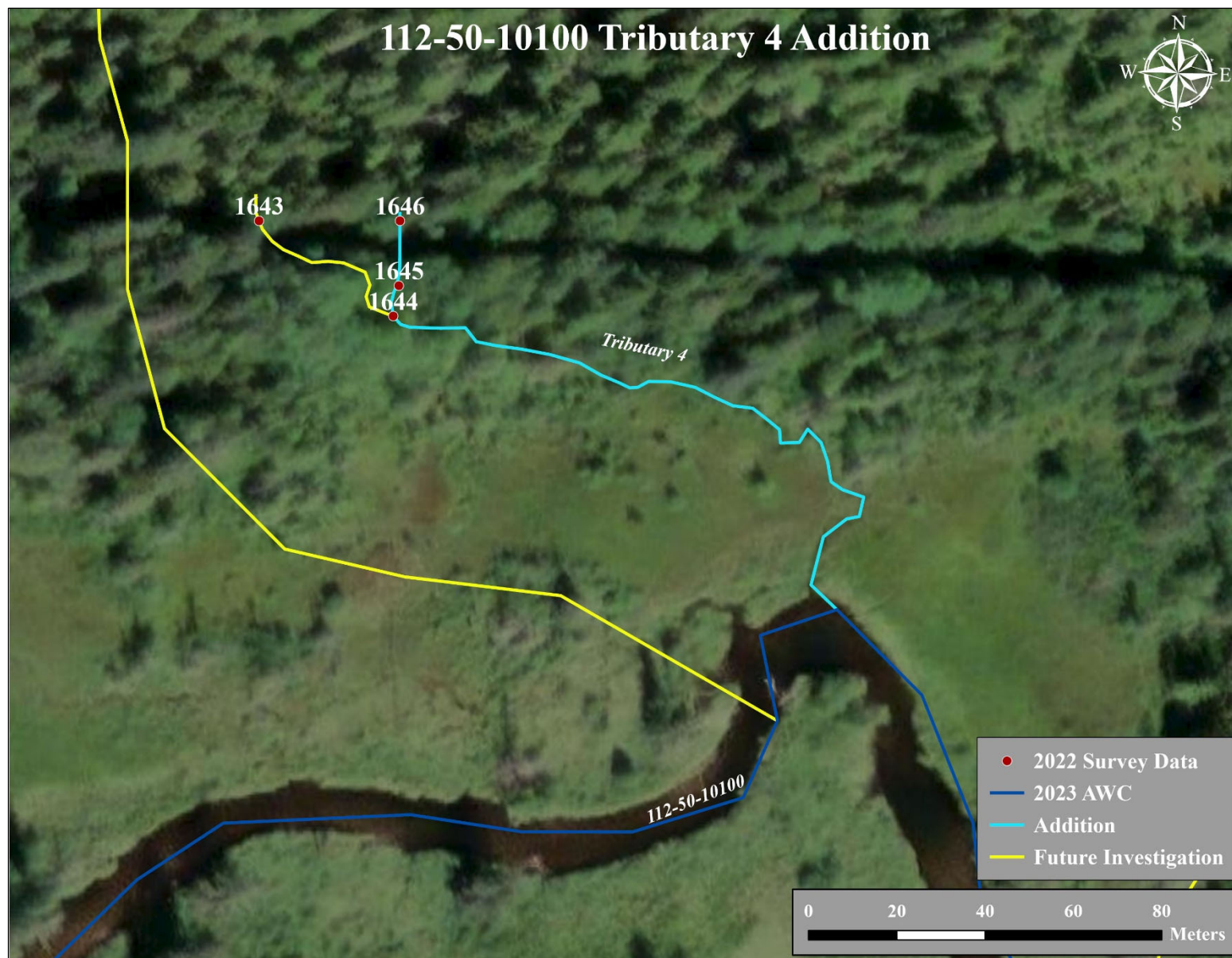


Figure 4.-112-50-10100 tributary 4 addition map.